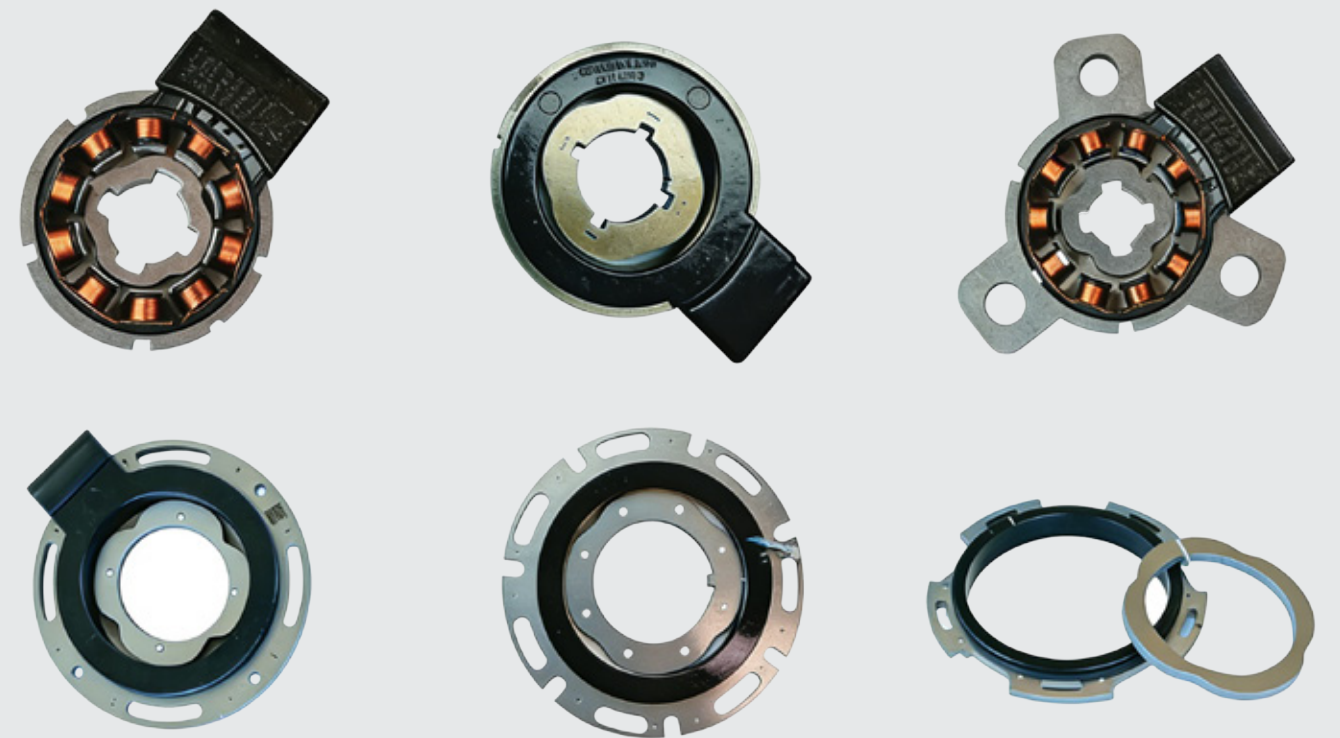


Global Resolver Provider



## Variable Reluctance Resolver



NIETZ ELECTRIC CO.,LTD

No.988, Fulian Rd. Gucun  
Industry, Baoshan District.  
Shanghai, China



Follow Us

+86 21 336 346 49

info@nietz.cn

www.nietz.cn



DISTRIBUTORS

Since  
2005



**NIETZ**

» WHO WE ARE

Innovation +  
Driving Tomorrow

NIETZ is one Leading Manufacturer of industrial automation products, with more than millions units sold worldwide, established 2005 Shanghai, China. We are committed to building long-lasting and successful business relations with our partners, has gained good reputation and deep influence.

We aim to provide the best quality, unmatched reliability and low price in our services and our products. We aim to reduce your costs, streamline manufacturing, to improve productivity.

The products of NIETZ are Variable Frequency Inverters, AC Servo System, Soft Starter, Planetary Gearboxes and Complete Device, The products NIETZ are technological advanced products and it has quite wide product range and already used widely in various applications such as textile machine, air compressor, hoist, packing machine, printing machine, electronic machine and other industries, which exported to over 40 countries and regions such as Europe, South America, Southeast Asia, Middle East and so on.

NIETZ always aims to be the professional driving solution provider and your mutual-benefit partner. «

## Catalogue / 目录

01 / 磁阻式  
VR resolver  
J37系列  
J37 series

03 / 磁阻式  
VR resolver  
J52系列  
J52 series

05 / 磁阻式  
VR resolver  
J56系列  
J56 series

07 / 磁阻式  
VR resolver  
J74系列  
J74 series

09 / 磁阻式  
VR resolver  
J89系列  
J89 series

11 / 磁阻式  
VR resolver  
J101系列  
J101 series

13 / 磁阻式  
VR resolver  
J124系列  
J124 series

15 / 磁阻式  
VR resolver  
J160系列  
J160 series

17 / 磁阻式  
VR resolver  
215系列  
J215 series

02 / 磁阻式  
VR resolver  
J37T系列  
J37T series

04 / 磁阻式  
VR resolver  
J52T系列  
J52T series

06 / 磁阻式  
VR resolver  
J59系列  
J59 series

08 / 磁阻式  
VR resolver  
J76系列  
J76 series

10 / 磁阻式  
VR resolver  
J100系列  
J100 series

12 / 磁阻式  
VR resolver  
J117系列  
J117 series

14 / 磁阻式  
VR resolver  
J132系列  
J132 series

16 / 磁阻式  
VR resolver  
J191系列  
J191 series

18 / 磁阻式  
VR resolver  
316系列  
J316 series

## 产品简介 Product introduction

磁阻式旋变(Variable Reluctance Resolver)是依据电磁感应原理,仅通过转子凸极效应产生具有正弦轨迹的气隙磁导变化,使输出绕组的感生电压随机械转角作相应正弦或余弦变化的角度传感元件。适用于较大的温度与湿度范围和恶劣环境,并且高可靠性。

广泛应用于新能源汽车、轨道交通、矿山机械、纺织机械等诸多电驱动领域。产品具有以下特点:

- 高精度的绝对式检测,适应高转速应用需求;
- 超薄结构、结构紧凑、安装使用方便;
- 可靠性高、寿命长、适用于恶劣工况;
- 较高的性价比;
- 独有专利技术。

VR resolver is an absolute angle sensor component that converts mechanical rotary angle into electric signal through the electromagnetic induction.

It is applicable to wide temperature, humidity range, severe environments and has high reliability. It is widely used in many fields such as new energy vehicles, rail transit, mining machinery, textile machinery and so on. The product has the following characteristics:

- High accurate absolute angle detection, adapted to high speed application demand;
- Ultra-thin configuration, compact structure, easy installation;
- High reliability, long lifespan, applicable for bad working conditions;
- Highly cost-effective;
- Unique patented technology.

## 电路原理 Circuit Theory

磁阻式旋转变压器是根据定子内圈与转子外圈间隙的磁导率,而产生特定波形的曲线(正弦波)。定子里有1组励磁绕组和2组输出绕组,根据检测转子和定子间的间隙变化,以sin和cos式波形的变化来输出电压。

VR resolver can produce a particular waveform curve (Sine) based on the magnetic permeability between the inner ring of the stator and the outer ring of the rotor. The stator has 1 set of excitation winding and 2 output windings. The output voltage changes as a sine or cosine characteristic according to the change of the air gap between rotor and stator.

具体参照图1、图2。Please refer to diagram 1 and diagram 2 for details.

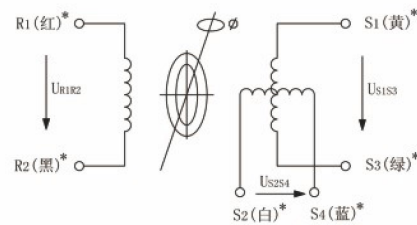


图1接线图  
Diagram 1 wiring diagram

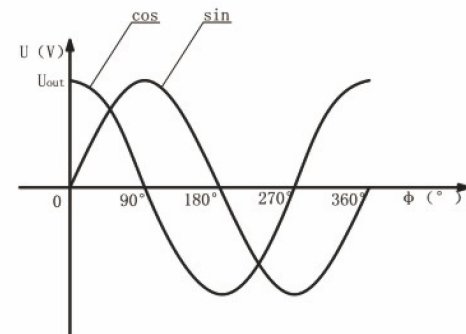


图2输出电压特性  
Diagram 2 Output voltage characteristic

\*根据不同产品,可能颜色有变化,具体参照产品规格图纸。  
The wire colors may vary depending on different products, please refer to the product specification drawing for specifics.

励磁正Input Voltage(Ref+)	红线Red
励磁负Input Voltage(Ref-)	黑线Black
正弦正Sin Output(Sin+)	白线White
正弦负Sin Output(Sin-)	蓝线Blue
余弦正Cos Output(Cos+)	黄线Yellow
余弦负Cos Output(Cos-)	绿线Green

电压方程式: Voltage equation

$$U_{S1S3} = K U_{R1R2} \cos(p\phi)$$

$$U_{S2S4} = K U_{R1R2} \sin(p\phi)$$

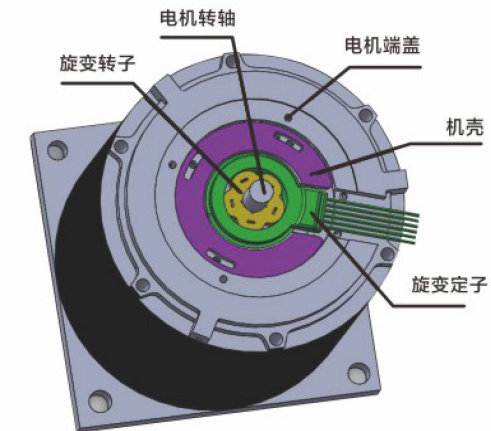
K: 变压比 K: Transformation Ratio

$U_{R1R2}$ : 励磁电压 Excitation voltage

p: 极对数 p: Number of pole-pairs

$\phi$ : 角度  $\phi$ : Angle

## 安装精度说明 Installation guide and assembly sections



### 安装精度说明: Installation accuracy instruction:

旋变的安装过程需要保证安装精度,安装不当的情况下可能会导致旋变性能不良、损坏、甚至无法使用。

对于旋变同电动机的配合状况,建议采用间隙配合: H7/h6/ and h6/H7

对于旋变定子与转子的同心度偏差,建议不大于0.05mm;

对于旋变定子、转子与电动机轴的垂直度,建议不大于0.05mm;

对于旋变定子、转子轴向偏差,通常不大于0.5mm即可。

The installation process of resolver needs to ensure the setting accuracy. Improper installation may result in poor performance, damage, even unavailability.

For the fitting of the resolver and motor, it is suggested to use clearance fit;

For the concentricity tolerance of the stator and rotor, it is suggested not more than 0.05mm;

For the perpendicularity tolerance of the stator, rotor and motor shaft, it is suggested not more than 0.05mm;

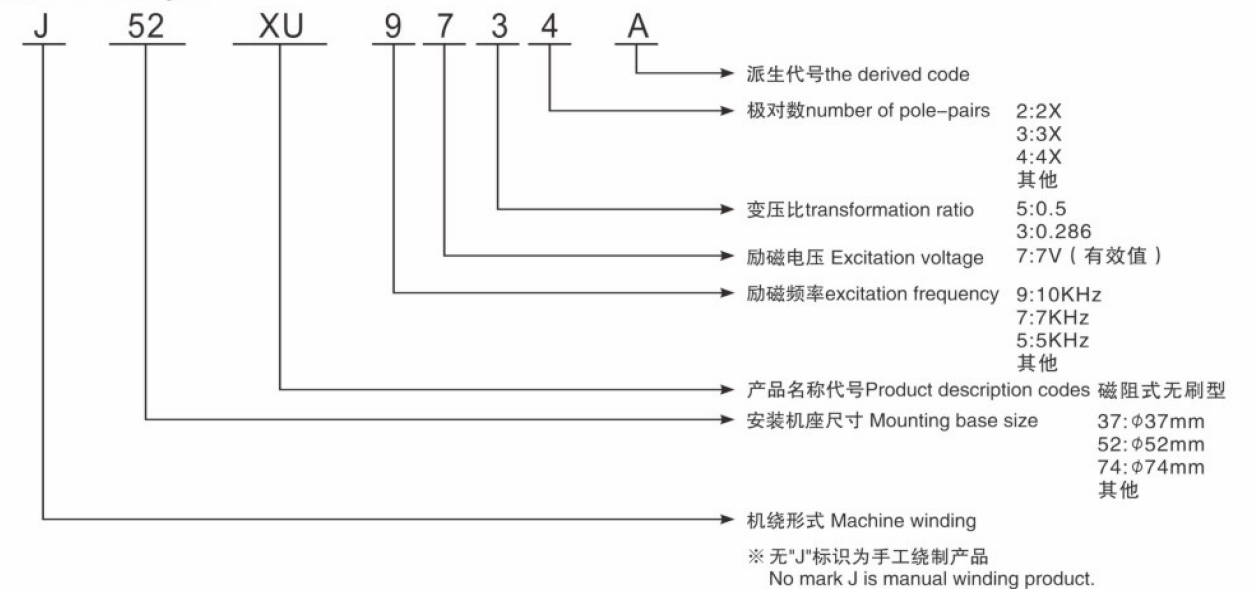
For the axial deviation of the stator and rotor, it is usually suggested not more than 0.5mm.

## 磁阻式旋变型号命名规则 Naming rules for VR resolver part no.

磁阻式旋转变压器的型号由四部分组成:机座号、产品名称代号、性能参数代号和派生代号组成。

VR resolver part no. includes four parts: Frame No., Product description code, Performance parameter code and the derived code.

示例: For example:



# J37系列

磁阻式  
VR RESOLVER



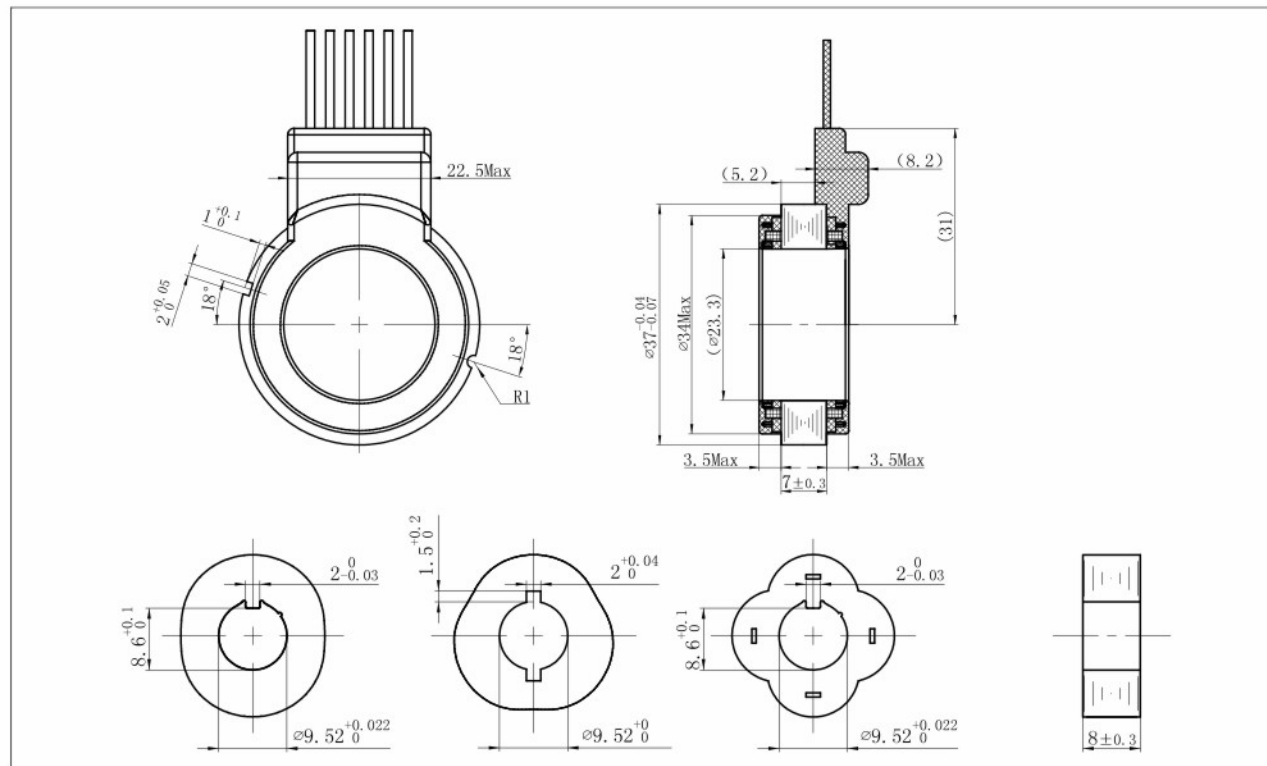
J37 series(OD 37mm series)

## 性能参数 SPECIFICATIONS

推荐型号 (Recommended part no.)	J37XU9732R	J37XU9733R	J37XU9734G-L40
极对数 (Pole pairs)	2	3	4
激磁电压 (Input voltage)	AC7Vrms	AC7Vrms	AC7Vrms
激磁频率(Input frequency)	10KHz	10KHz	10KHz
变压比 (Transformation ratio)	0.286±10%	0.286±10%	0.286±10%
电气误差 (Accuracy)	≤±60'	≤±40'	≤±30'
相位移 (Phase shift)	≤±10°	≤±10°	≤±10°
耐电压(Dielectric strength)	AC500Vrms 1s (500V AC rms for one second)		
绝缘电阻(Insulation resistance)	250MΩ MIN		
转子孔径 (Rotor ID)	9.52mm	9.52mm	9.52mm
引出线规格 (截面积) Wire spec.(sectional area)	0.35mm <sup>2</sup>	0.35mm <sup>2</sup>	0.35mm <sup>2</sup>
允许最大转速(Max operating speed)	30000 rpm		
工作温度范围(Operating temperature range)	-40°C ~ +155°C		

备注：产品详情可联系市场部获取相关外形图，引线长度、线束处理、转子内孔孔径等可根据需求咨询定制化生产事宜。

## 外观尺寸 OUTLINE DIMENSION (单位:mm) Dimension : mm



# J37T系列

磁阻式  
VR RESOLVER



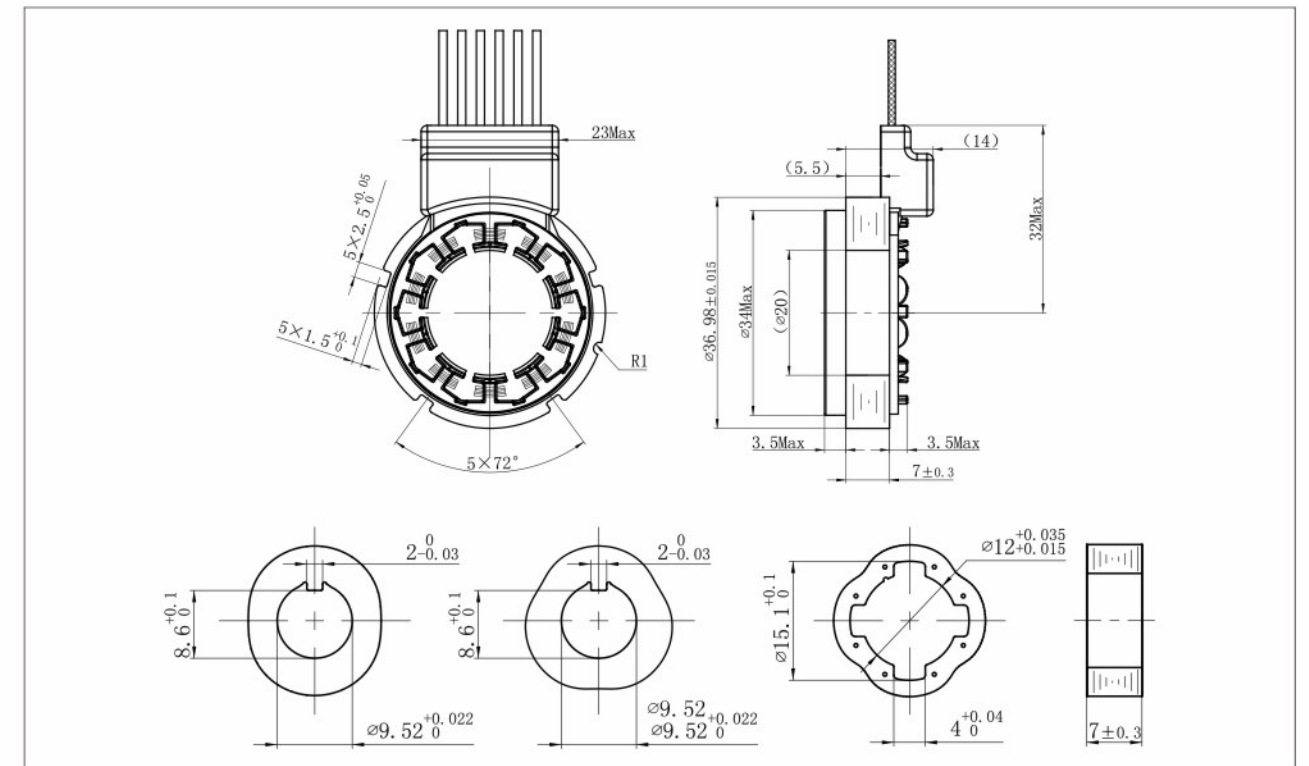
J37T series(OD 37mm series)

## 性能参数 SPECIFICATIONS

推荐型号 (Recommended part no.)	J37XU9732T	J37XU9733T	J37XU9734T
极对数 (Pole pairs)	2	3	4
激磁电压 (Input voltage)	AC7Vrms	AC7Vrms	AC7Vrms
激磁频率 (Input frequency)	10KHz	10KHz	10KHz
变压比 (Transformation ratio)	0.286±10%	0.286±10%	0.286±10%
电气误差 (Accuracy)	≤±60'	≤±40'	≤±30'
相位移 (Phase shift)	T.B.D	T.B.D	(-14°±5°)
耐电压(Dielectric strength)	AC500Vrms 1s (500V AC rms for one second)		
绝缘电阻(Insulation resistance)	250MΩ MIN		
转子孔径 (Rotor ID)	9.52mm	9.52mm	12mm
引出线规格 (截面积) Wire spec.(sectional area)	0.35mm <sup>2</sup>	0.35mm <sup>2</sup>	0.35mm <sup>2</sup>
允许最大转速(Max operating speed)	30000 rpm		
工作温度范围(Operating temperature range)	-40°C ~ +155°C		

备注：产品详情可联系市场部获取相关外形图，引线长度、线束处理、转子内孔孔径等可根据需求咨询定制化生产事宜。

## 外观尺寸 OUTLINE DIMENSION (单位:mm) Dimension : mm







# J74 系列

磁阻式  
VR RESOLVER



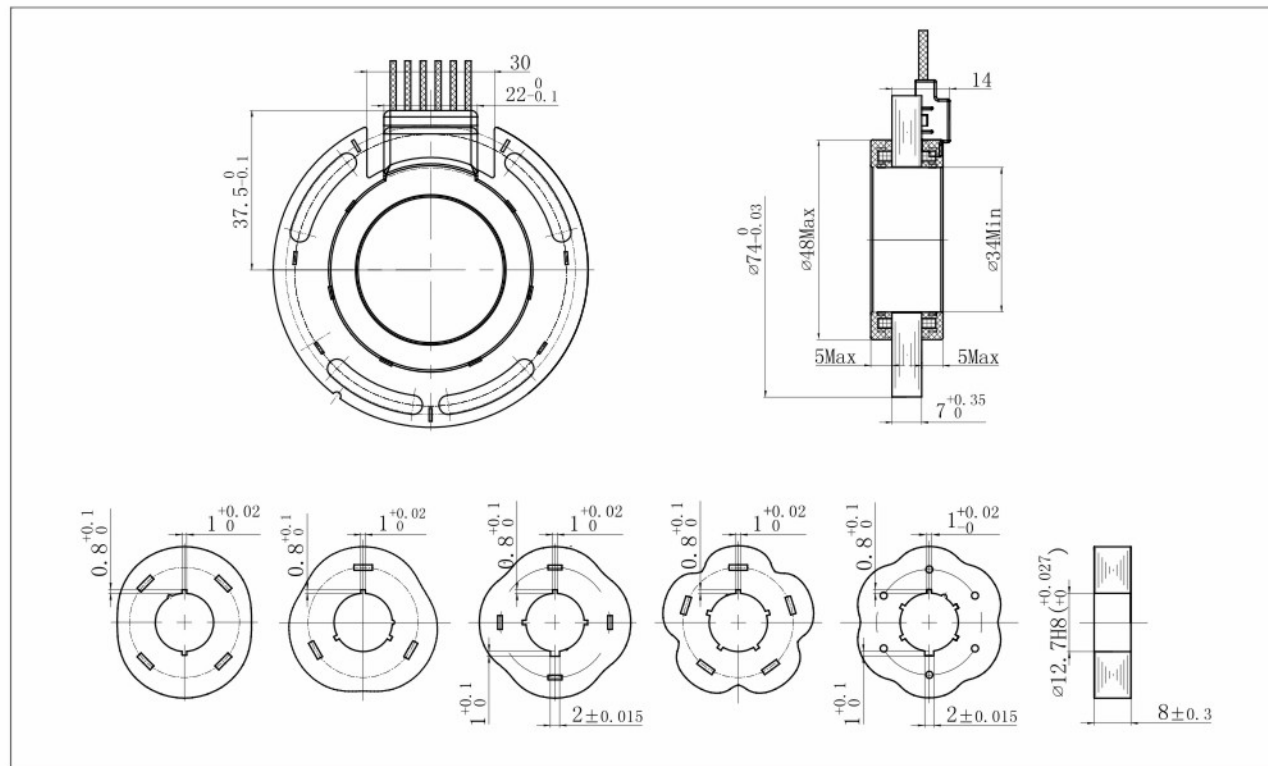
J74 series(OD 74mm series)

## 性能参数 SPECIFICATIONS

推荐型号 (Recommended part no.)	J74XU9732B	J74XU9733	J74XU9734A-L5	J74XU9735C	J74XU9736A
极对数 (Pole pairs)	2	3	4	5	6
激磁电压 (Input voltage)	AC7Vrms	AC7Vrms	AC7Vrms	AC7Vrms	AC7Vrms
激磁频率(Input frequency)	10KHz	10KHz	10KHz	10KHz	10KHz
变压比 (Transformation ratio)	0.286±10%	0.286±10%	0.286±10%	0.286±10%	0.286±10%
电气误差 (Accuracy)	≤±60'	≤±40'	≤±30'	≤±25'	≤±20'
相位移 (Phase shift)	≤±15°	≤±15°	≤±15°	≤±15°	≤±15°
耐电压(Dielectric strength)	AC500Vrms 1s (500V AC rms for one second)				
绝缘电阻(Insulation resistance)	250MΩ MIN				
转子孔径 (Rotor ID)	12.7mm	12.7mm	12.7mm	18mm	18mm
引出线规格 (截面积) Wire spec.(sectional area)	0.35mm <sup>2</sup>	0.35mm <sup>2</sup>	0.35mm <sup>2</sup>	0.35mm <sup>2</sup>	0.35mm <sup>2</sup>
允许最大转速(Max operating speed)	30000 rpm				
工作温度范围(Operating temperature range)	-40°C ~ +155°C				

备注：产品详情可联系市场部获取相关外形图，引线长度、线束处理、转子内孔孔径等可根据需求咨询定制化生产事宜。

## 外观尺寸 OUTLINE DIMENSION (单位: mm) Dimension : mm



# J76 系列

磁阻式  
VR RESOLVER



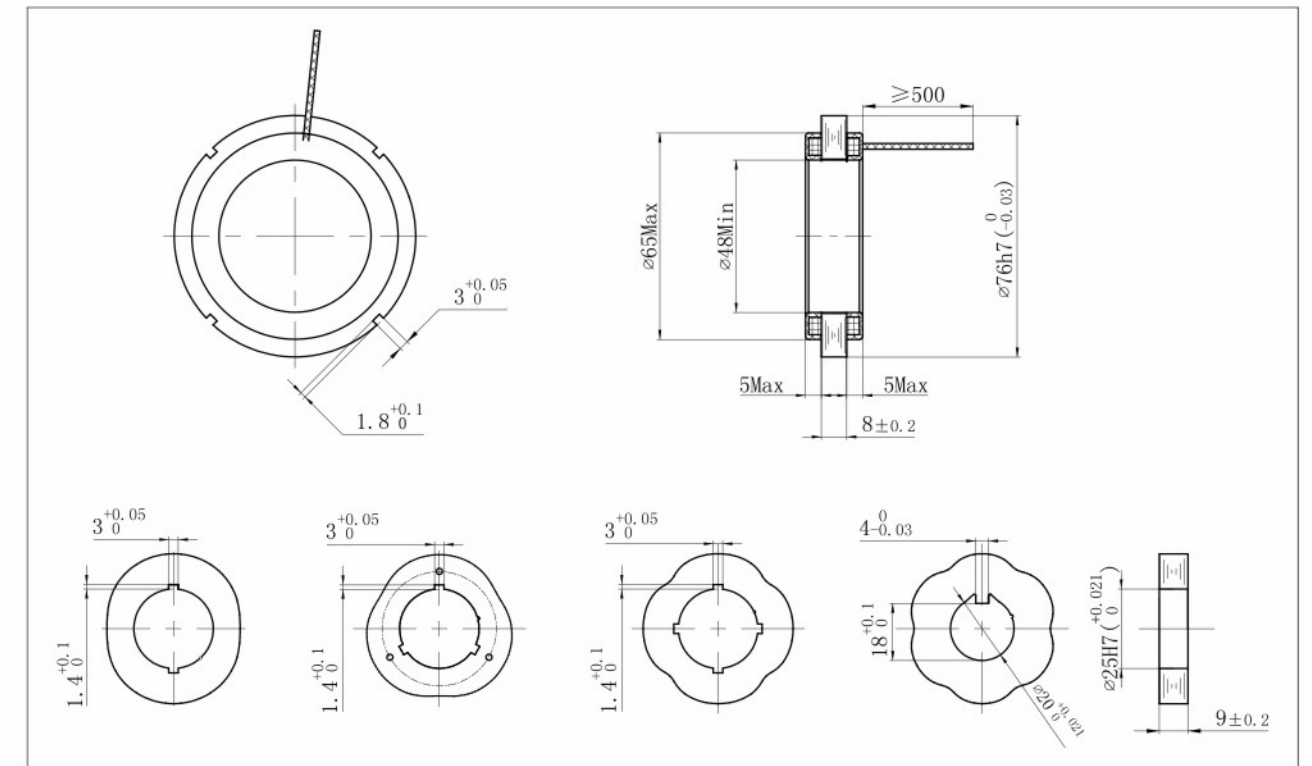
J76 series(OD 76mm series)

## 性能参数 SPECIFICATIONS

推荐型号 (Recommended part no.)	J76XU9732	J76XU9733	J76XU9734	J76XU9736
极对数 (Pole pairs)	2	3	4	6
激磁电压 (Input voltage)	AC7Vrms	AC7Vrms	AC7Vrms	AC7Vrms
激磁频率(Input frequency)	10KHz	10KHz	10KHz	10KHz
变压比 (Transformation ratio)	0.286±10%	0.286±10%	0.286±10%	0.286±10%
电气误差 (Accuracy)	≤±60'	≤±40'	≤±30'	≤±20'
相位移 (Phase shift)	≤±10°	≤±10°	≤±12°	≤±10°
耐电压(Dielectric strength)	AC500Vrms 1s (500V AC rms for one second)			
绝缘电阻(Insulation resistance)	250MΩ MIN			
转子孔径 (Rotor ID)	25mm	25mm	25mm	20mm
引出线规格 (截面积) Wire spec.(sectional area)	0.15mm <sup>2</sup>	0.15mm <sup>2</sup>	0.15mm <sup>2</sup>	0.15mm <sup>2</sup>
允许最大转速(Max operating speed)	30000 rpm			
工作温度范围(Operating temperature range)	-40°C ~ +155°C			

备注：产品详情可联系市场部获取相关外形图，引线长度、线束处理、转子内孔孔径等可根据需求咨询定制化生产事宜。

## 外观尺寸 OUTLINE DIMENSION (单位: mm) Dimension : mm



# J89系列

磁阻式  
VR RESOLVER



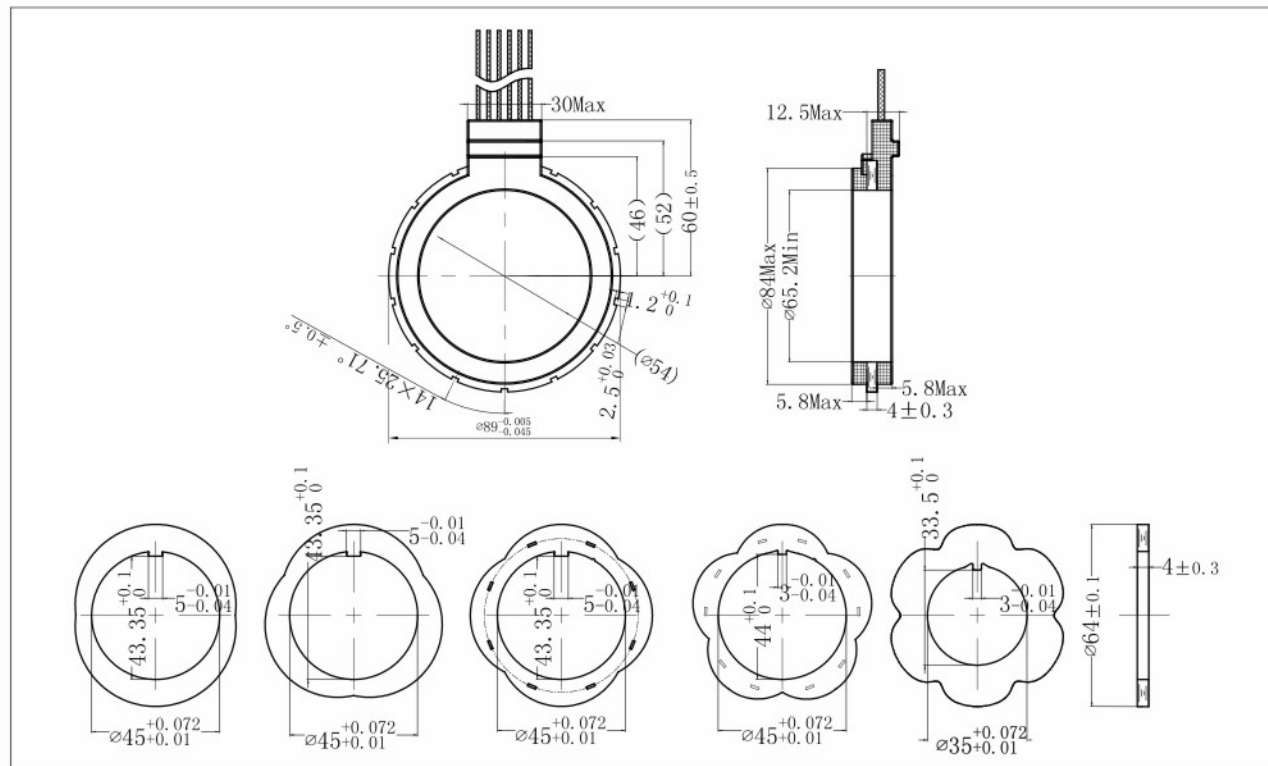
J89 series(OD 89mm series)

## 性能参数 SPECIFICATIONS

推荐型号 (Recommended part no.)	J89XU9732	J89XU9733	J89XU9734	J89XU9735	J89XU9736
极对数 (Pole pairs)	2	3	4	5	6
激磁电压 (Input voltage)	AC7Vrms	AC7Vrms	AC7Vrms	AC7Vrms	AC7Vrms
激磁频率(Input frequency)	10KHz	10KHz	10KHz	10KHz	10KHz
变压比 (Transformation ratio)	0.286±10%	0.286±10%	0.286±10%	0.286±10%	0.286±10%
电气误差 (Accuracy)	≤±60'	≤±40'	≤±30'	≤±24'	≤±20'
相位移 (Phase shift)	≤±15°	≤±15°	≤±15°	≤±15°	≤±15°
耐电压(Dielectric strength)	AC500Vrms 1s (500V AC rms for one second)				
绝缘电阻(Insulation resistance)	250MΩ MIN				
转子孔径 (Rotor ID)	45mm	45mm	45mm	45mm	35mm
引出线规格 (截面积) Wire spec.(sectional area)	0.35mm <sup>2</sup>	0.35mm <sup>2</sup>	0.35mm <sup>2</sup>	0.35mm <sup>2</sup>	0.35mm <sup>2</sup>
允许最大转速(Max operating speed)	30000 rpm				
工作温度范围(Operating temperature range)	-40°C ~ +155°C				

备注: 产品详情可联系市场部获取相关外形图, 引线长度、线束处理、转子内孔孔径等可根据需求咨询定制化生产事宜。

## 外观尺寸 OUTLINE DIMENSION (单位:mm) Dimension : mm



# J100系列

磁阻式  
VR RESOLVER



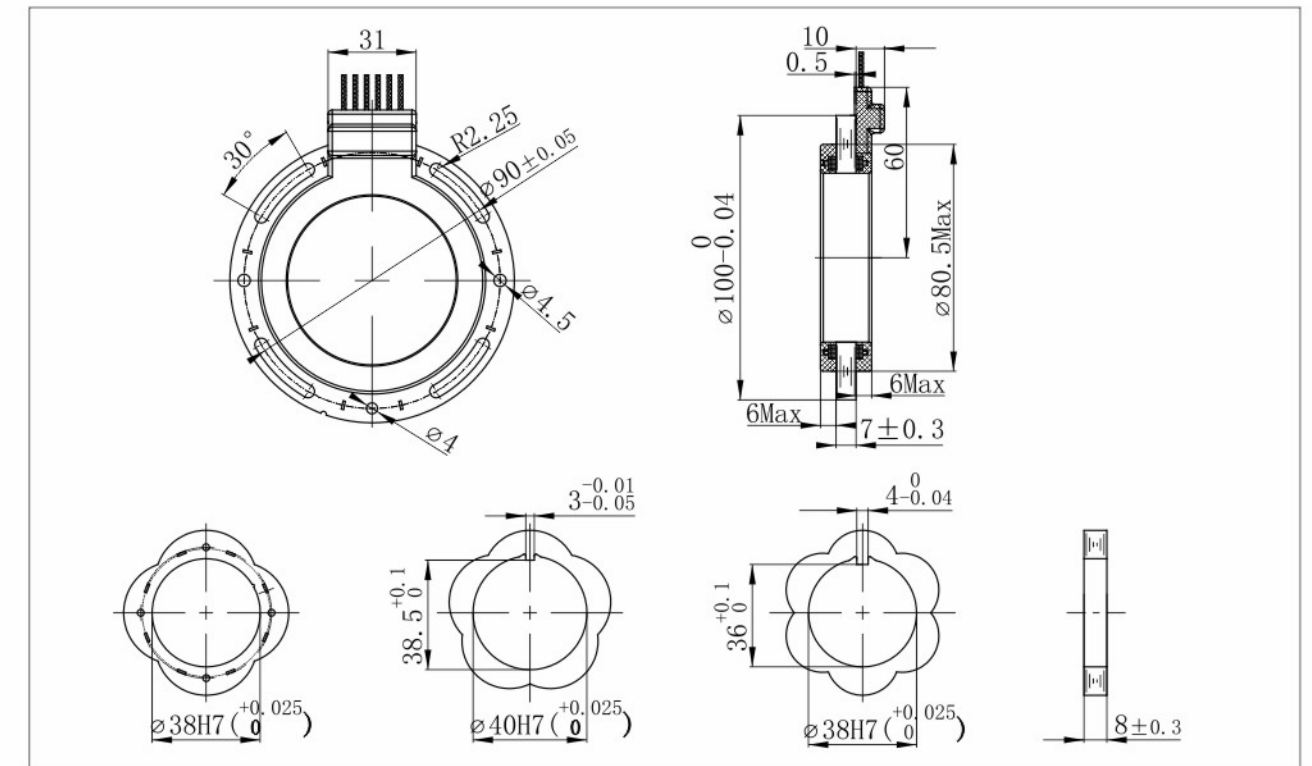
J100 series(OD 100mm series)

## 性能参数 SPECIFICATIONS

推荐型号 (Recommended part no.)	J100XU9734A	J100XU9735	J100XU9736
极对数 (Pole pairs)	4	5	6
激磁电压 (Input voltage)	AC7Vrms	AC7Vrms	AC7Vrms
激磁频率(Input frequency)	10KHz	10KHz	10KHz
变压比 (Transformation ratio)	0.286±10%	0.286±10%	0.286±10%
电气误差 (Accuracy)	≤±30'	≤±24'	≤±20'
相位移 (Phase shift)	≤±10°	≤±10°	≤±10°
耐电压(Dielectric strength)	AC500Vrms 1s (500V AC rms for one second)		
绝缘电阻(Insulation resistance)	250MΩ MIN		
转子孔径 (Rotor ID)	38mm	40mm	38mm
引出线规格 (截面积) Wire spec.(sectional area)	0.5mm <sup>2</sup>	0.5mm <sup>2</sup>	0.5mm <sup>2</sup>
允许最大转速(Max operating speed)	30000 rpm		
工作温度范围(Operating temperature range)	-40°C ~ +155°C		

备注: 产品详情可联系市场部获取相关外形图, 引线长度、线束处理、转子内孔孔径等可根据需求咨询定制化生产事宜。

## 外观尺寸 OUTLINE DIMENSION (单位:mm) Dimension : mm



# J101 系列

磁阻式  
VR RESOLVER



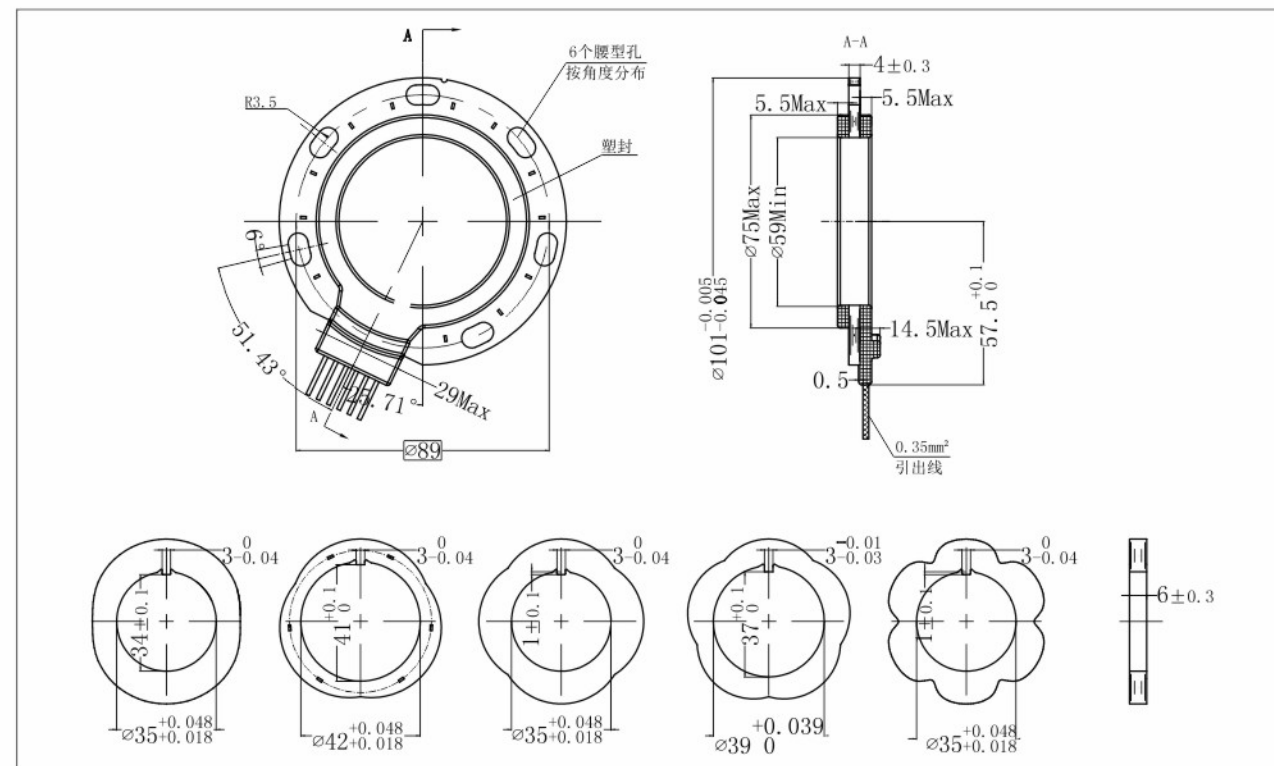
J101 series(OD 101mm series)

## 性能参数 SPECIFICATIONS

推荐型号 (Recommended part no.)	J101XU9732E	J101XU9733A	J101XU9734G	J101XU9735B	J101XU9736A
极对数 (Pole pairs)	2	3	4	5	6
激磁电压 (Input voltage)	AC7Vrms	AC7Vrms	AC7Vrms	AC7Vrms	AC7Vrms
激磁频率(Input frequency)	10KHz	10KHz	10KHz	10KHz	10KHz
变压比 (Transformation ratio)	0.286±10%	0.286±10%	0.286±10%	0.286±10%	0.286±10%
电气误差 (Accuracy)	≤±60'	≤±40'	≤±30'	≤±25'	≤±20'
相位移 (Phase shift)	≤±15°	≤±15°	≤±15°	≤±15°	≤±15°
耐电压(Dielectric strength)	AC500Vrms 1s (500V AC rms for one second)				
绝缘电阻(Insulation resistance)	250MΩ MIN				
转子孔径 (Rotor ID)	35mm	42mm	35mm	39mm	35mm
引出线规格 (截面积) Wire spec.(sectional area)	0.35mm <sup>2</sup>	0.35mm <sup>2</sup>	0.35mm <sup>2</sup>	0.35mm <sup>2</sup>	0.35mm <sup>2</sup>
允许最大转速(Max operating speed)	30000 rpm				
工作温度范围(Operating temperature range)	-40°C ~ +155°C				

备注: 产品详情可联系市场部获取相关外形图, 引线长度、线束处理、转子内孔孔径等可根据需求咨询定制化生产事宜。

## 外观尺寸 OUTLINE DIMENSION (单位: mm) Dimension : mm



# J117 系列

磁阻式  
VR RESOLVER



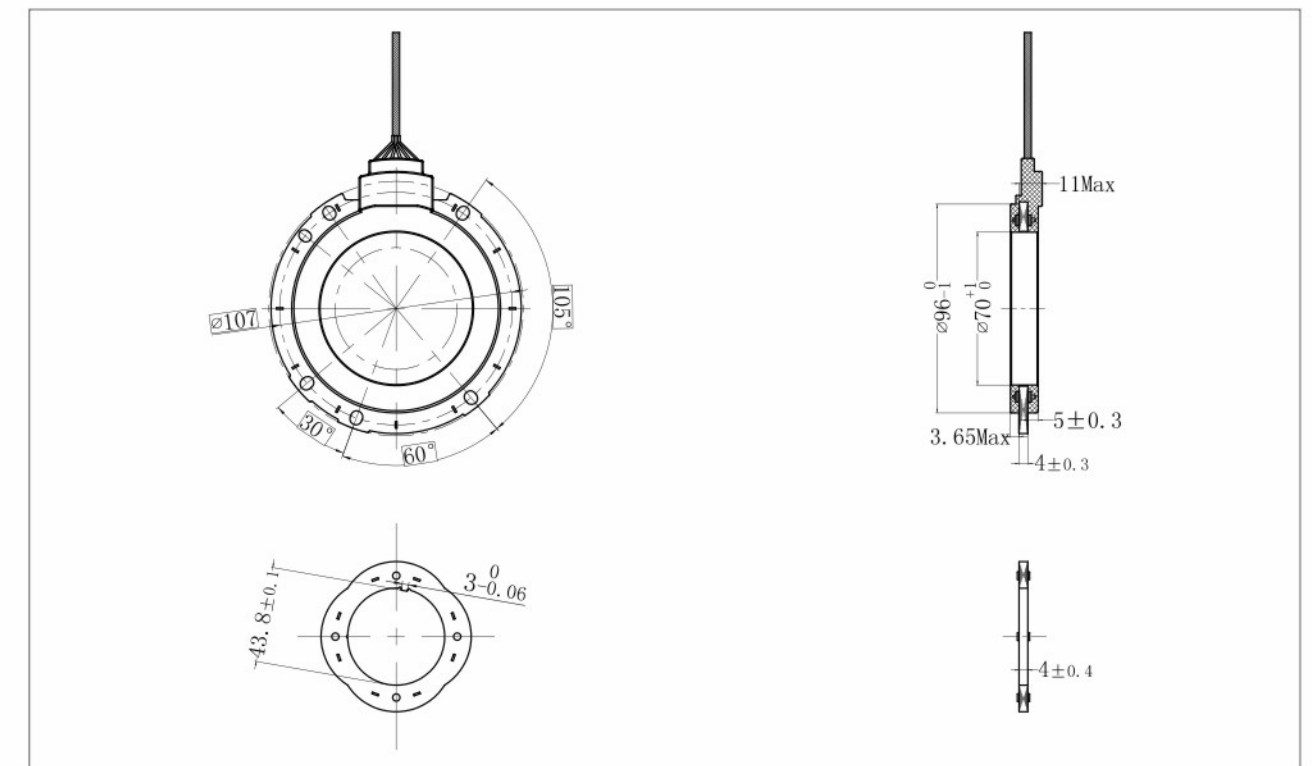
J117 series(OD 117mm series)

## 性能参数 SPECIFICATIONS

推荐型号 (Recommended part no.)	J117XU9732	J117XU9733	J117XU9734	J117XU9735	J117XU9736
极对数 (Pole pairs)	2	3	4	5	6
激磁电压 (Input voltage)	AC7Vrms	AC7Vrms	AC7Vrms	AC7Vrms	AC7Vrms
激磁频率(Input frequency)	10KHz	10KHz	10KHz	10KHz	10KHz
变压比 (Transformation ratio)	0.286±10%	0.286±10%	0.286±10%	0.286±10%	0.286±10%
电气误差 (Accuracy)	≤±60'	≤±40'	≤±30'	≤±25'	≤±20'
相位移 (Phase shift)	≤±15°	≤±15°	≤±15°	≤±15°	≤±15°
耐电压(Dielectric strength)	AC500Vrms 1s (500V AC rms for one second)				
绝缘电阻(Insulation resistance)	250MΩ MIN				
转子孔径 (Rotor ID)	T.B.D	T.B.D	44.6mm	T.B.D	T.B.D
引出线规格 (截面积) Wire spec.(sectional area)	0.35mm <sup>2</sup>	0.35mm <sup>2</sup>	0.35mm <sup>2</sup>	0.35mm <sup>2</sup>	0.35mm <sup>2</sup>
允许最大转速(Max operating speed)	30000 rpm				
工作温度范围(Operating temperature range)	-40°C ~ +155°C				

备注: 产品详情可联系市场部获取相关外形图, 引线长度、线束处理、转子内孔孔径等可根据需求咨询定制化生产事宜。

## 外观尺寸 OUTLINE DIMENSION (单位: mm) Dimension : mm



# J124 系列

磁阻式  
VR RESOLVER



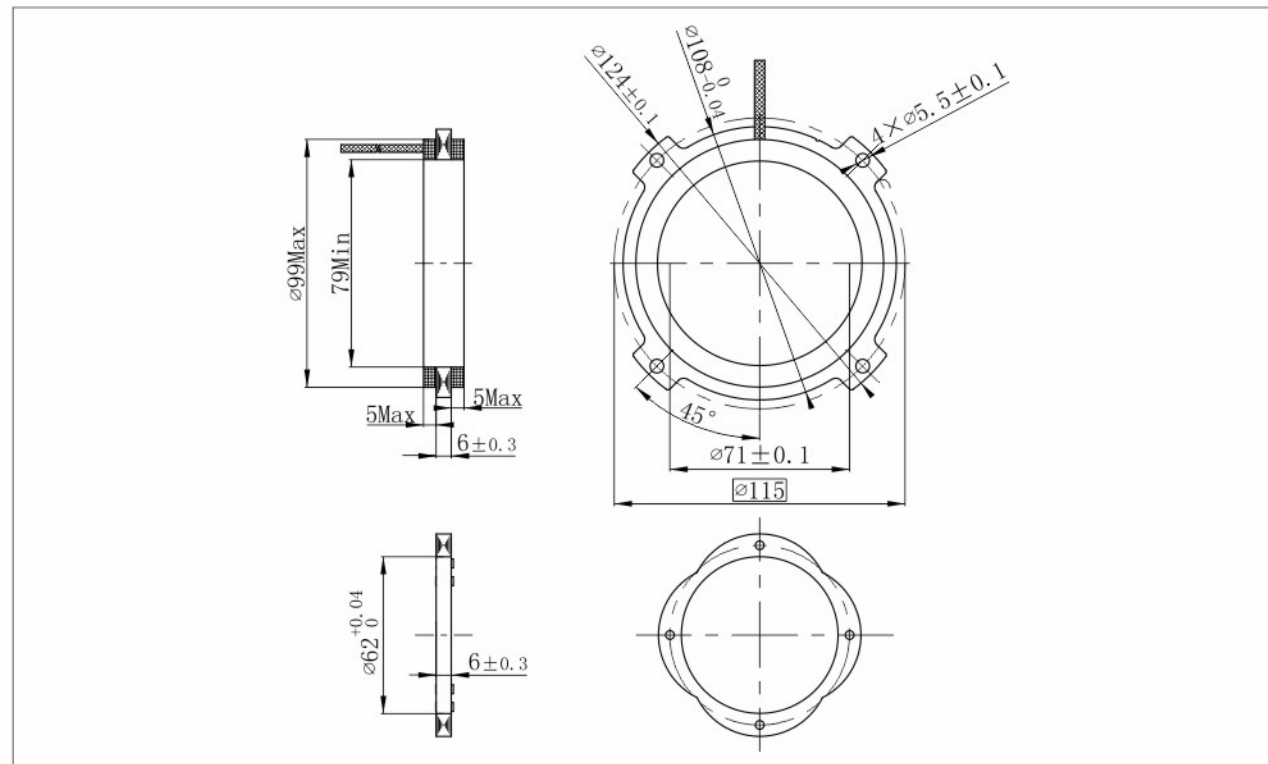
J124 series(OD 124mm series)

## 性能参数 SPECIFICATIONS

推荐型号 (Recommended part no.)	J124XU9732	J124XU9733	J124XU9734	J124XU9736
极对数 (Pole pairs)	2	4	6	8
激磁电压 (Input voltage)	AC7Vrms	AC7Vrms	AC7Vrms	AC7Vrms
激磁频率(Input frequency)	10KHz	10KHz	10KHz	10KHz
变压比 (Transformation ratio)	0.286±10%	0.286±10%	0.286±10%	0.286±10%
电气误差 (Accuracy)	≤±60'	≤±40'	≤±30'	≤±20'
相位移 (Phase shift)	≤±10°	≤±10°	≤±10°	≤±10°
耐电压(Dielectric strength)	AC500Vrms 1s (500V AC rms for one second)			
绝缘电阻(Insulation resistance)	250MΩ MIN			
转子孔径 (Rotor ID)	T.B.D	T.B.D	62mm	T.B.D
引出线规格 (截面积) Wire spec.(sectional area)	0.35mm <sup>2</sup>	0.35mm <sup>2</sup>	0.35mm <sup>2</sup>	0.35mm <sup>2</sup>
允许最大转速(Max operating speed)	30000 rpm			
工作温度范围(Operating temperature range)	-40°C ~ +155°C			

备注：产品详情可联系市场部获取相关外形图，引线长度、线束处理、转子内孔孔径等可根据需求咨询定制化生产事宜。

## 外观尺寸 OUTLINE DIMENSION (单位:mm) Dimension : mm



# J132 系列

磁阻式  
VR RESOLVER



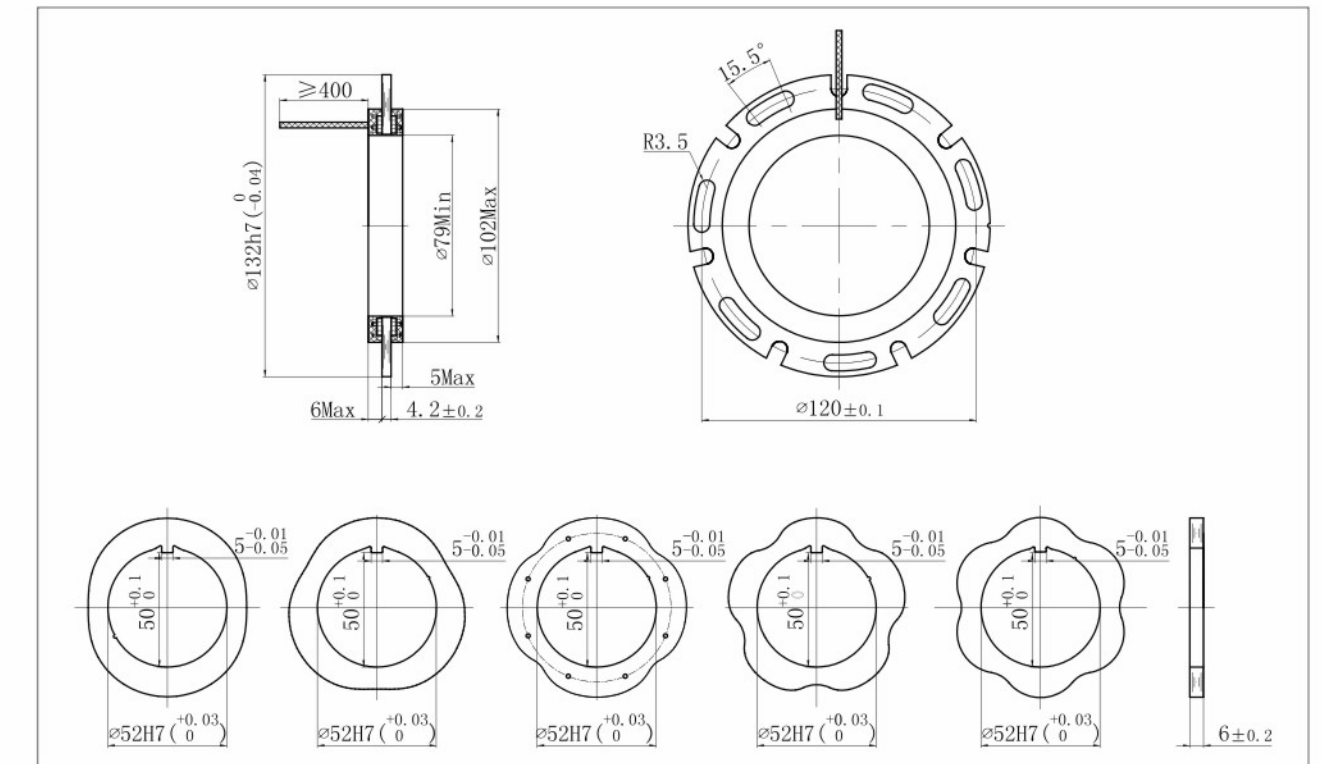
J132 series(OD 132mm series)

## 性能参数 SPECIFICATIONS

推荐型号 (Recommended part no.)	J132XU9732	J132XU9733	J132XU9734	J132XU9735	J132XU9736A
极对数 (Pole pairs)	2	3	4	5	6
激磁电压 (Input voltage)	AC7Vrms	AC7Vrms	AC7Vrms	AC7Vrms	AC7Vrms
激磁频率(Input frequency)	10KHz	10KHz	10KHz	10KHz	10KHz
变压比 (Transformation ratio)	0.286±10%	0.286±10%	0.286±10%	0.286±10%	0.286±10%
电气误差 (Accuracy)	≤±60'	≤±40'	≤±30'	≤±25'	≤±20'
相位移 (Phase shift)	≤±10°	≤±10°	≤±10°	≤±10°	≤±15°
耐电压(Dielectric strength)	AC500Vrms 1s (500V AC rms for one second)				
绝缘电阻(Insulation resistance)	250MΩ MIN				
转子孔径 (Rotor ID)	52mm	52mm	52mm	52mm	52mm
引出线规格 (截面积) Wire spec.(sectional area)	0.35mm <sup>2</sup>	0.35mm <sup>2</sup>	0.35mm <sup>2</sup>	0.35mm <sup>2</sup>	0.35mm <sup>2</sup>
允许最大转速(Max operating speed)	30000 rpm				
工作温度范围(Operating temperature range)	-40°C ~ +155°C				

备注：产品详情可联系市场部获取相关外形图，引线长度、线束处理、转子内孔孔径等可根据需求咨询定制化生产事宜。

## 外观尺寸 OUTLINE DIMENSION (单位:mm) Dimension : mm



# J160 系列

磁阻式  
VR RESOLVER



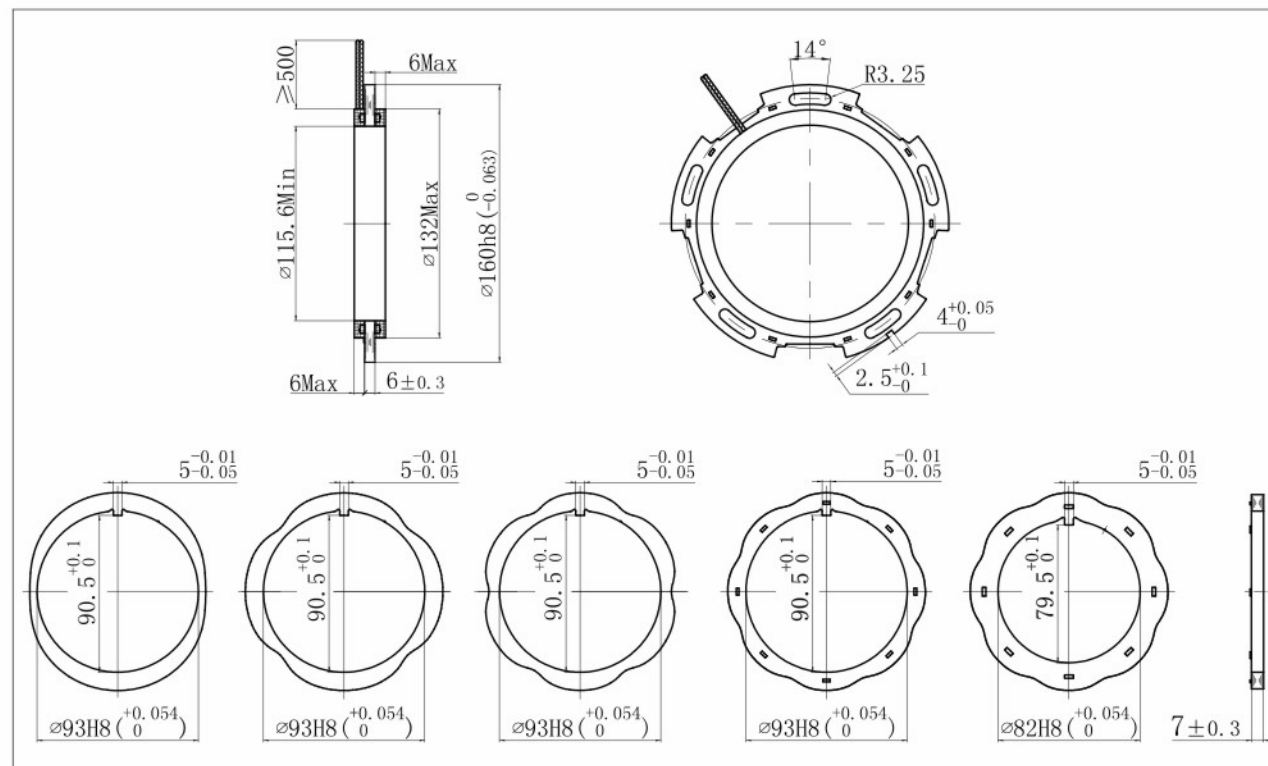
J160 series(OD 160mm series)

## 性能参数 SPECIFICATIONS

推荐型号 (Recommended part no.)	J160XU9732	J160XU9734	J160XU9736	J160XU9738
极对数 (Pole pairs)	2	4	6	8
激磁电压 (Input voltage)	AC7Vrms	AC7Vrms	AC7Vrms	AC7Vrms
激磁频率(Input frequency)	10KHz	10KHz	10KHz	10KHz
变压比 (Transformation ratio)	0.286±10%	0.286±10%	0.286±10%	0.286±10%
电气误差 (Accuracy)	≤±60'	≤±30'	≤±20'	≤±15'
相位移 (Phase shift)	≤±10°	≤±10°	≤±10°	≤±10°
耐电压(Dielectric strength)	AC500Vrms 1s (500V AC rms for one second)			
绝缘电阻(Insulation resistance)	250MΩ MIN			
转子孔径 (Rotor ID)	93mm	93mm	93mm	93mm/82mm
引出线规格 (截面积) Wire spec.(sectional area)	0.35mm <sup>2</sup>	0.35mm <sup>2</sup>	0.35mm <sup>2</sup>	0.35mm <sup>2</sup>
允许最大转速(Max operating speed)	30000 rpm			
工作温度范围(Operating temperature range)	-40°C ~ +155°C			

备注: 产品详情可联系市场部获取相关外形图, 引线长度、线束处理、转子内孔孔径等可根据需求咨询定制化生产事宜。

## 外观尺寸 OUTLINE DIMENSION (单位: mm) Dimension : mm



# J191 系列

磁阻式  
VR RESOLVER



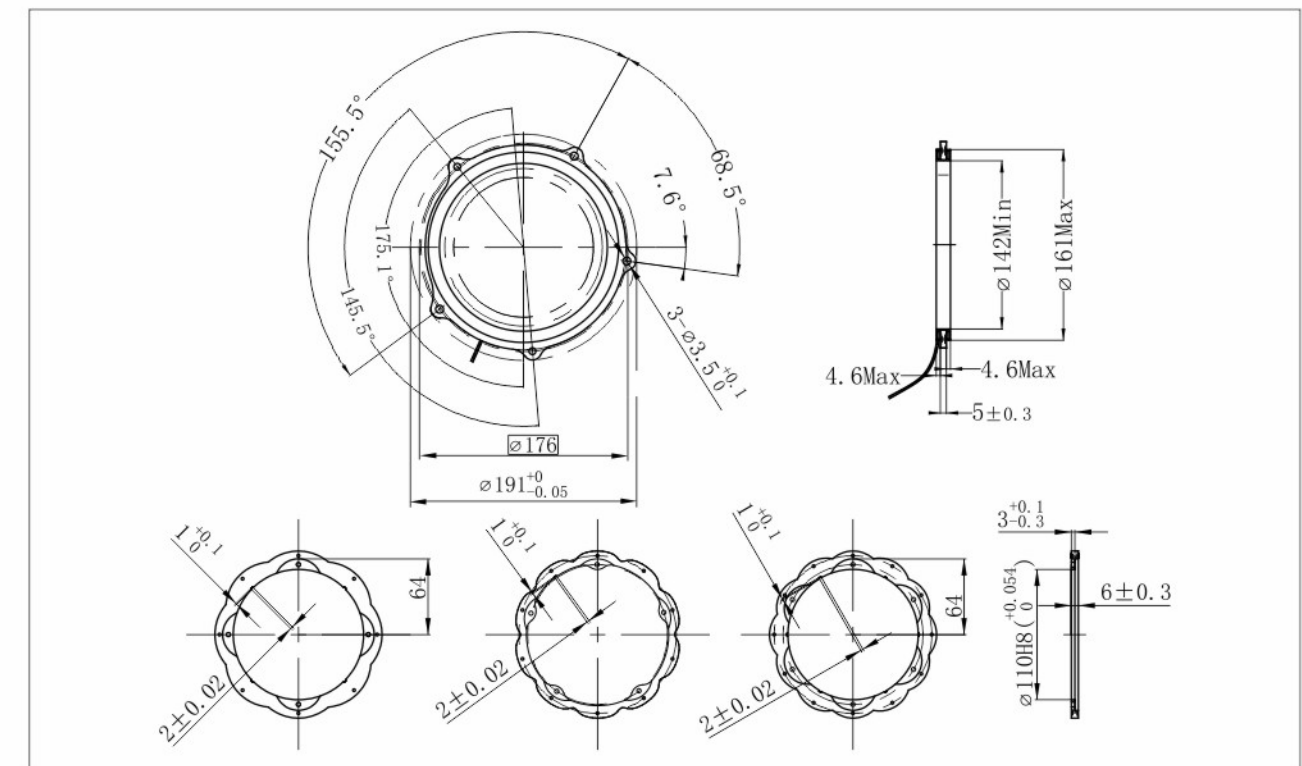
J191 series(OD 191mm series)

## 性能参数 SPECIFICATIONS

推荐型号 (Recommended part no.)	191XU9738	J191XU97310A	191XU97312
极对数 (Pole pairs)	8	10	12
激磁电压 (Input voltage)	AC7Vrms	AC7Vrms	AC7Vrms
激磁频率(Input frequency)	10KHz	10KHz	10KHz
变压比 (Transformation ratio)	0.286±10%	0.286±10%	0.286±10%
电气误差 (Accuracy)	≤±15'	≤±12'	≤±10'
相位移 (Phase shift)	≤±15°	≤±15°	≤±15°
耐电压(Dielectric strength)	AC500Vrms 1s (500V AC rms for one second)		
绝缘电阻(Insulation resistance)	250MΩ MIN		
转子孔径 (Rotor ID)	110mm	120mm	110mm
引出线规格 (截面积) Wire spec.(sectional area)	0.35mm <sup>2</sup>	0.35mm <sup>2</sup>	0.35mm <sup>2</sup>
允许最大转速(Max operating speed)	30000 rpm		
工作温度范围(Operating temperature range)	-40°C ~ +155°C		

备注: 产品详情可联系市场部获取相关外形图, 引线长度、线束处理、转子内孔孔径等可根据需求咨询定制化生产事宜。

## 外观尺寸 OUTLINE DIMENSION (单位: mm) Dimension : mm



# 215 系列

磁阻式  
VR RESOLVER



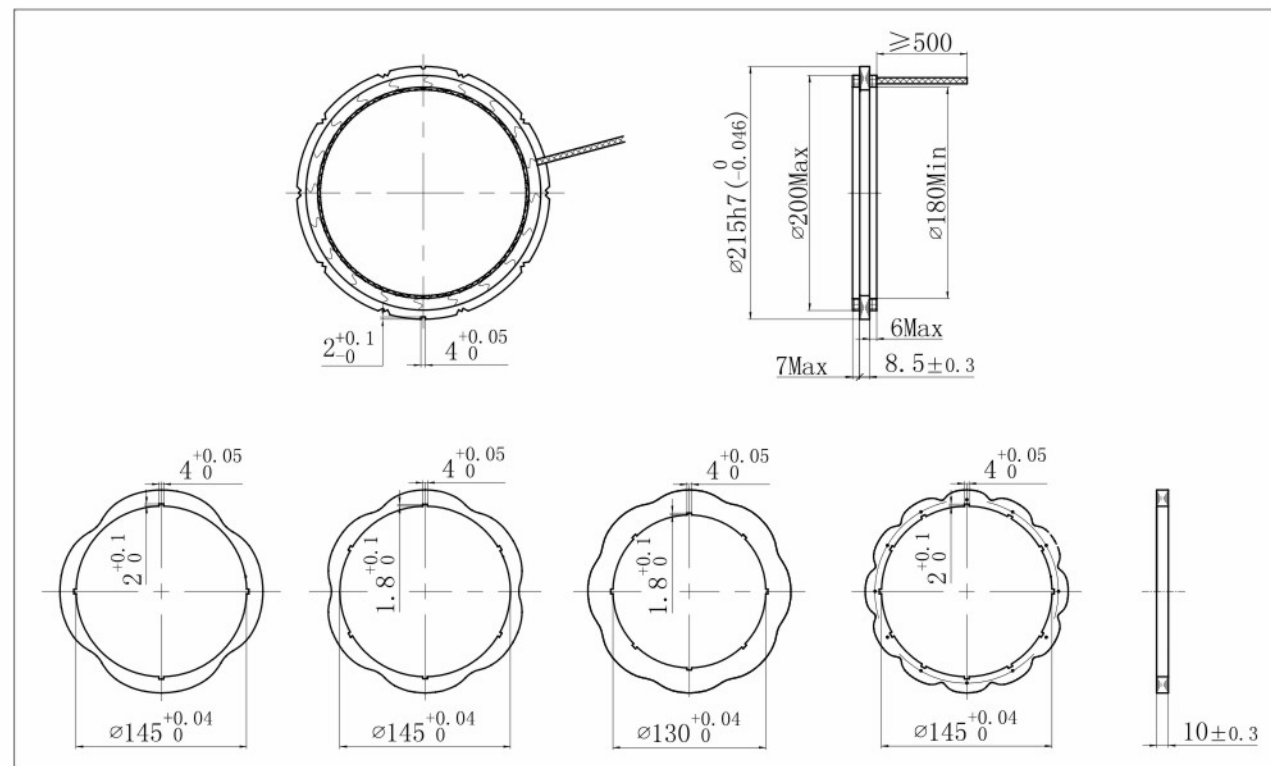
215 series(OD 215mm series)

## 性能参数 SPECIFICATIONS

推荐型号 (Recommended part no.)	215XU9734	215XU9736	215XU9738	215XU97312A
极对数 (Pole pairs)	4	6	8	12
激磁电压 (Input voltage)	AC7Vrms	AC7Vrms	AC7Vrms	AC7Vrms
激磁频率(Input frequency)	10KHz	10KHz	10KHz	10KHz
变压比 (Transformation ratio)	0.286±10%	0.286±10%	0.286±10%	0.286±10%
电气误差 (Accuracy)	≤±30'	≤±20'	≤±15'	≤±10'
相位移 (Phase shift)	≤±10°	≤±10°	≤±10°	≤±10°
耐电压(Dielectric strength)	AC500Vrms 1s (500V AC rms for one second)			
绝缘电阻(Insulation resistance)	250MΩ MIN			
转子孔径 (Rotor ID)	145mm	145mm	130mm	145mm
引出线规格 (截面积) Wire spec.(sectional area)	0.35mm <sup>2</sup>	0.35mm <sup>2</sup>	0.35mm <sup>2</sup>	0.35mm <sup>2</sup>
允许最大转速(Max operating speed)	30000 rpm			
工作温度范围(Operating temperature range)	-40°C ~ +155°C			

备注: 产品详情可联系市场部获取相关外形图, 引线长度、线束处理、转子内孔孔径等可根据需求咨询定制化生产事宜。

## 外观尺寸 OUTLINE DIMENSION (单位:mm) Dimension : mm



# 316 系列

磁阻式  
VR RESOLVER



316 series(OD 316mm series)

## 性能参数 SPECIFICATIONS

推荐型号 (Recommended part no.)	316XU9733	316XU9736	316XU9738
极对数 (Pole pairs)	3	6	8
激磁电压 (Input voltage)	AC7Vrms	AC7Vrms	AC7Vrms
激磁频率(Input frequency)	10KHz	10KHz	10KHz
变压比 (Transformation ratio)	0.286±10%	0.286±10%	0.286±10%
电气误差 (Accuracy)	≤±40'	≤±20'	≤±15'
相位移 (Phase shift)	≤±10°	≤±10°	≤±10°
耐电压(Dielectric strength)	AC500Vrms 1s (500V AC rms for one second)		
绝缘电阻(Insulation resistance)	250MΩ MIN		
转子孔径 (Rotor ID)	110mm	120mm	110mm
引出线规格 (截面积) Wire spec.(sectional area)	0.35mm <sup>2</sup>	0.35mm <sup>2</sup>	0.35mm <sup>2</sup>
允许最大转速(Max operating speed)	30000 rpm		
工作温度范围(Operating temperature range)	-40°C ~ +155°C		

备注: 产品详情可联系市场部获取相关外形图, 引线长度、线束处理、转子内孔孔径等可根据需求咨询定制化生产事宜。

## 外观尺寸 OUTLINE DIMENSION (单位:mm) Dimension : mm

